

# INSERT PREPARATION AND RANGE HOOD INSTALLATION GUIDE

---

## PREPARATION

The range hood is installed first, followed by the insert. Before installation, ensure the following:

- Before securing your range hood to the wall, prepare your ducting in a way that will line up with the insert's duct collar.
- Remove stainless steel baffles and blower to create access for securing your duct connection.
- See steps below to prepare your insert and ducting before installing the range hood.



**To protect the range hood, DO NOT remove the plastic protective wrap on liner and range hood until installation is complete.**

1. Locate studs, making vertical lines and displaying them on the wall. If possible, add material to the back of the wall with pieces of wood or a large piece of plywood.
2. Outline the bottom of the hood using a level device, and nail a temporary piece of 1x4 or 2x4 board (same length as your hood) lining up the top of the board with bottom hood line (range hood/insert will rest on the board, so please level it).
3. Prepare the insert for the range hood.

# INSERT AND RANGE HOOD INSTALLATION

- 1. Secure the insert through the inner housing to the wall on the bottom hood line.



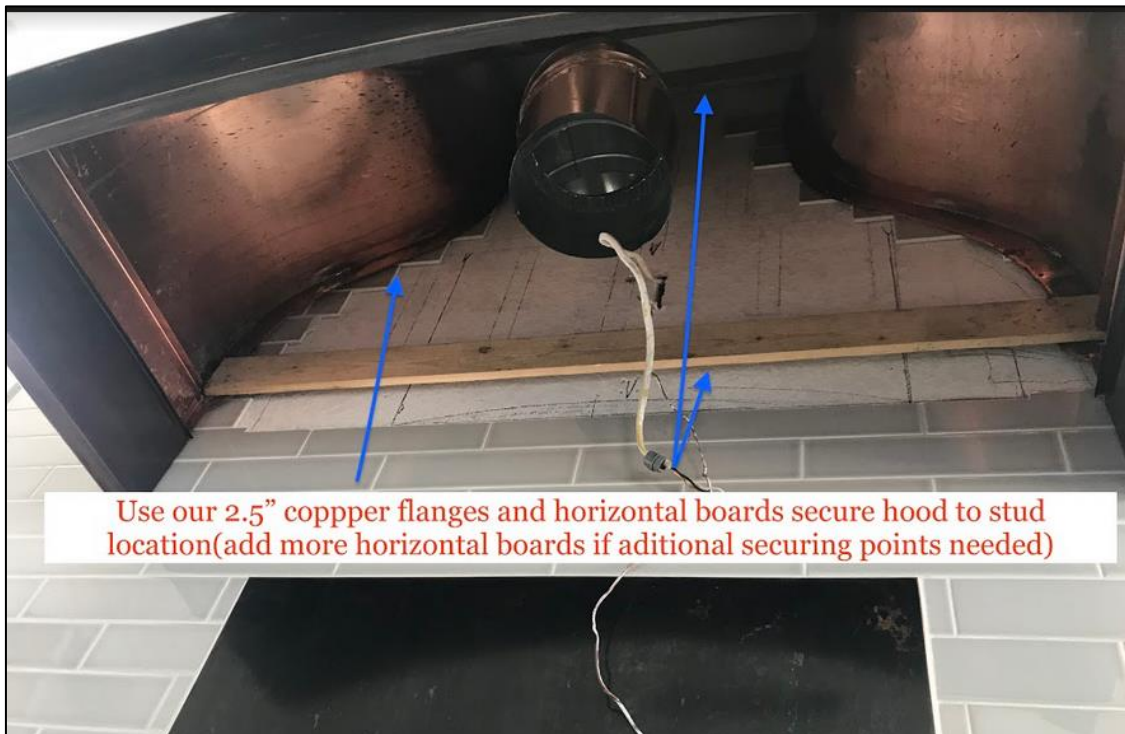
2. Prepare ducting to the wall or ceiling outlet.



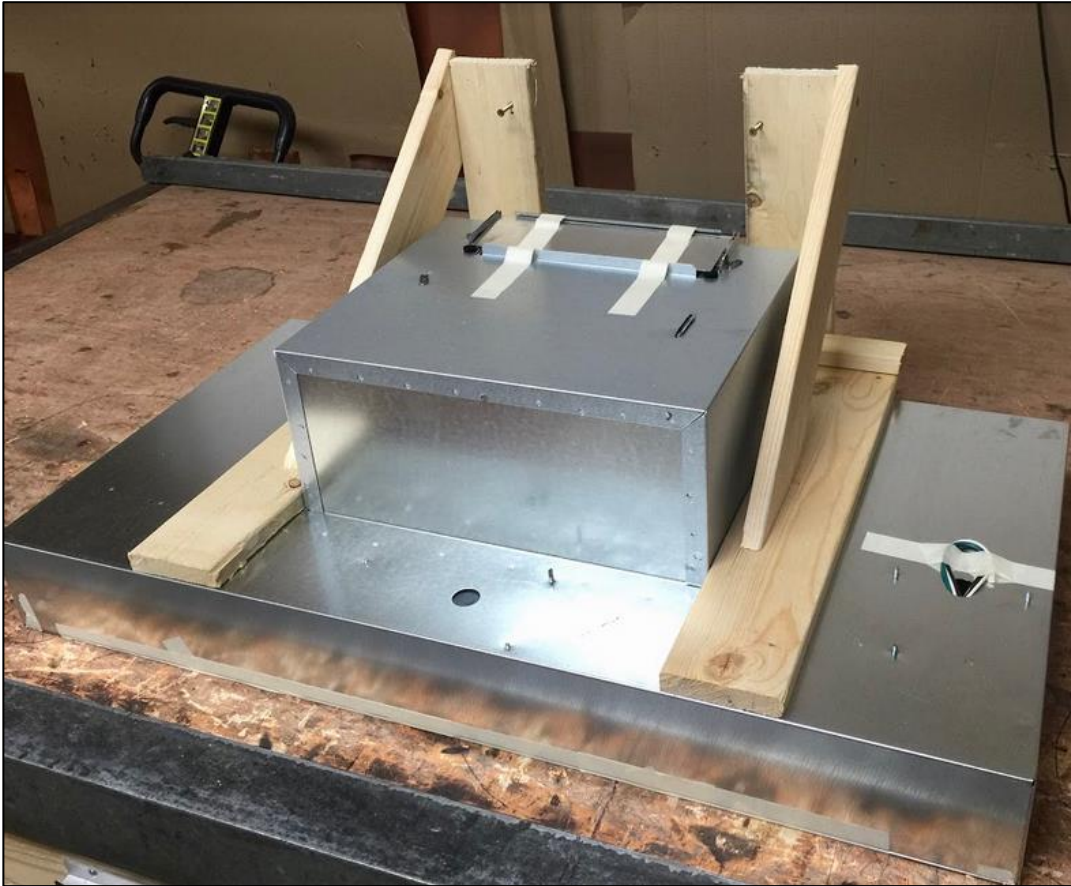
3. Remove the insert.



4. Secure the range hood to the stud location using your 2.5" copper flange around the backside body and horizontal boards on top and bottom. Add more boards in the same manner if more securing points are necessary.



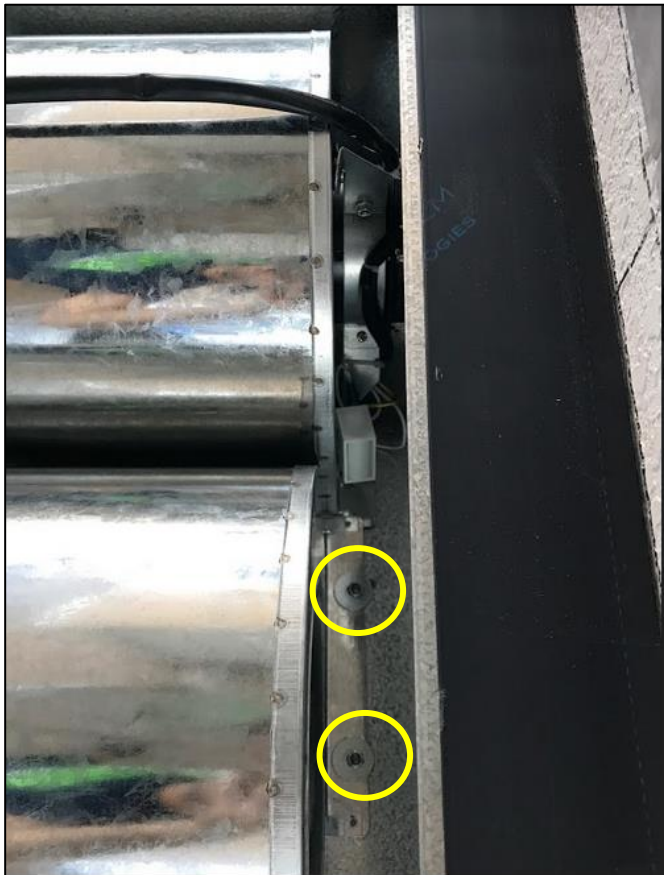
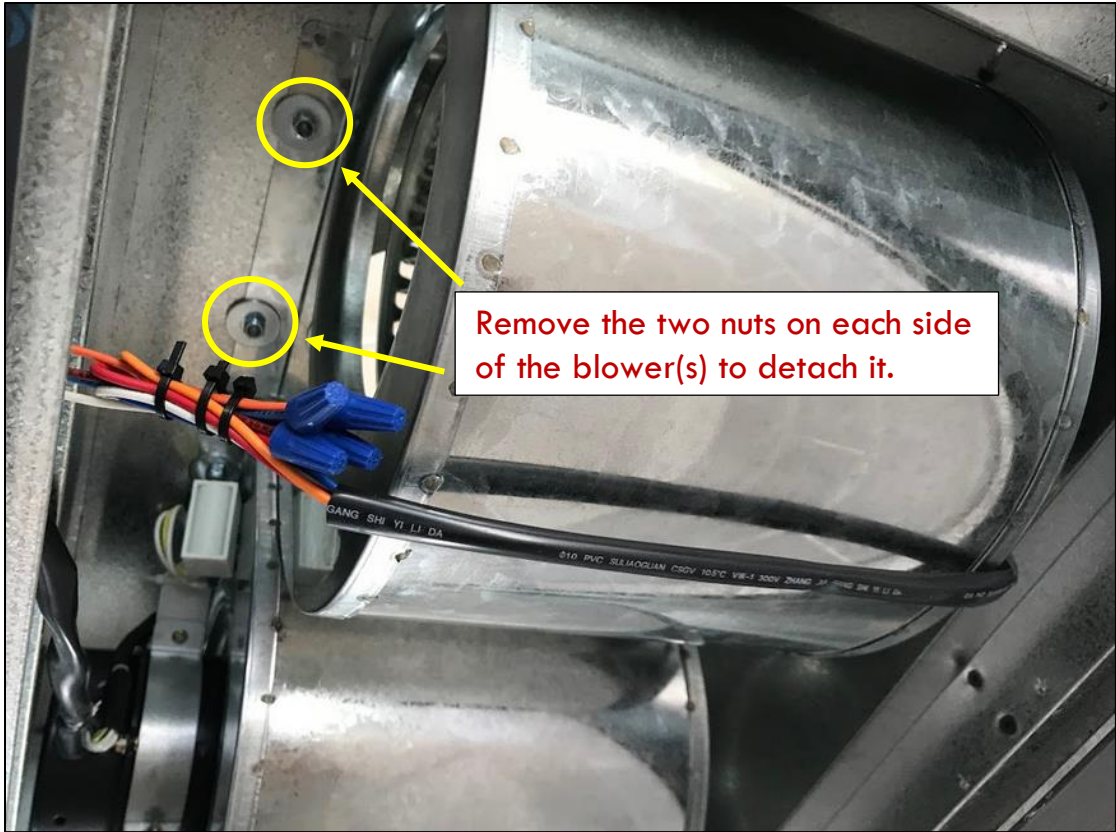
5. Prior to mounting the insert inside the range hood, hardwire the insert's electrical to the power supply. You may also pull the electrical supply inside the insert for easy access for hardwiring.
6. Slip the insert inside the range hood and lightly secure to old screw positions through the backside of insert or to upper wooden L-shape brackets inside the range hood.



7. Remove the blower(s) to access duct connection. Remove the two securing nuts on each side of the blower. There is also a small clip that holds the blower together.



**Tip:** Take a picture from underneath to make sure everything goes back in the same order.



8. Once the blowers are detached and hanging down, fit the insert collar inside the duct work. We recommend to have additional assistance, to help hold and support the blower(s).



9. Seal the duct connection with HVAC tape.



10. Add extra screws to secure the insert permanently inside the range hood. Secure blower(s) and filters back into place.



11. Enjoy your new range hood!

